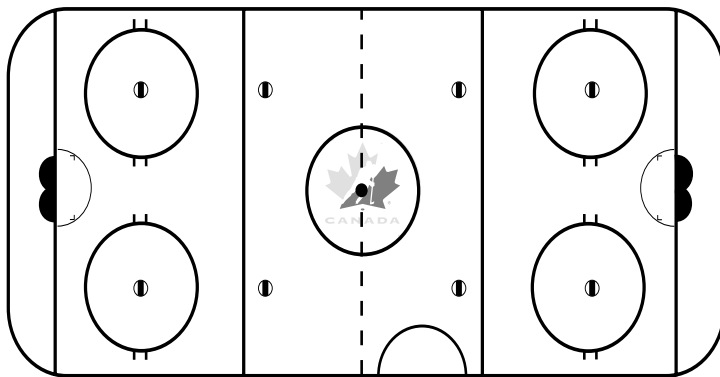


# SAFETY REQUIRES TEAMWORK!

## AN EMERGENCY ACTION PLAN FOR HOCKEY

### Equipment Locations



Please locate and identify areas on above map. (i.e., first aid room, route for ambulance crew, telephone)

### Emergency Telephone Numbers

Emergency \_\_\_\_\_ Ambulance \_\_\_\_\_  
 Fire Dept. \_\_\_\_\_ Hospital \_\_\_\_\_  
 Police \_\_\_\_\_ General \_\_\_\_\_

1. **Person in Charge**
  - Most qualified person available with training in first aid and emergency control
  - Familiarize yourself with arena emergency equipment
  - Take control of an emergency situation until a medical authority arrives
  - Assess injury status of player
2. **Call Person**
  - Location of emergency telephone
  - List of emergency telephone numbers
  - Directions to arena
  - Best route in and out of arena for ambulance crew
3. **Control Person**
  - Ensure proper room to work for person in charge and ambulance crew
  - Discuss emergency action plan with:
    - Arena staff
    - Officials
    - Opponents
  - Ensure that the route for the ambulance crew is clear and available
  - Seek highly trained medical personnel (i.e., MD, nurse) if requested by person in charge